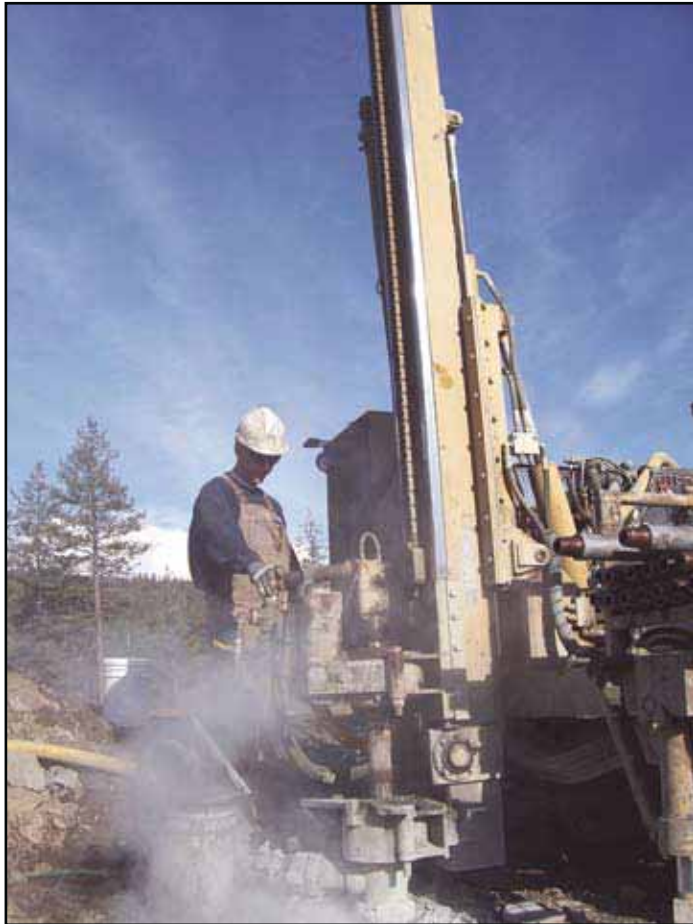


Pine Ridge homes offer geothermal utilities



The new geothermal utilities now being put in place will save 4,000 metric tonnes of greenhouse emissions annually.

Submitted by GeoTility Installations Corp.

The Statesman Group of Companies and GeoTility Geothermal Installations have announced an agreement to implement geothermal utility service at Pine Ridge Mountain Resort.

GeoTility Geothermal Installations announced today that Canada's largest comprehensive geothermal contractor has finalized contract agreements with the Statesman Group of Companies to provide the Pine Ridge Mountain Resort with a turnkey geothermal utility service.

GeoTility company president Jim Leask stated that the Pine Ridge Mountain Resort is the first of many new green projects that the Statesman Group of Companies are developing in an environmentally-sustainable manner.

By implementing geothermal heating and cooling technology, the development will be eliminating over 4,000 metric tonnes of greenhouse emissions annually while providing the customers ongoing savings on utilities.

Pine Ridge Mountain Resort, one of the leading resort developments in the Columbia Valley, will feature 700 residential units in a mix of 300 single-family cottages and 400 multi-family townhouses and villas. Pine Ridge Mountain Resort will

be a 100-percent geothermal community that will offer customers all the economic and environmental benefits of geothermal heating and cooling technology at a fraction of the cost.

Through GeoTility's sister company TerraSource Utility Services, all geothermal systems at the development will be installed in a utility application that will reduce the capital costs of the technology while offering the customers the option of buying out the system outright.

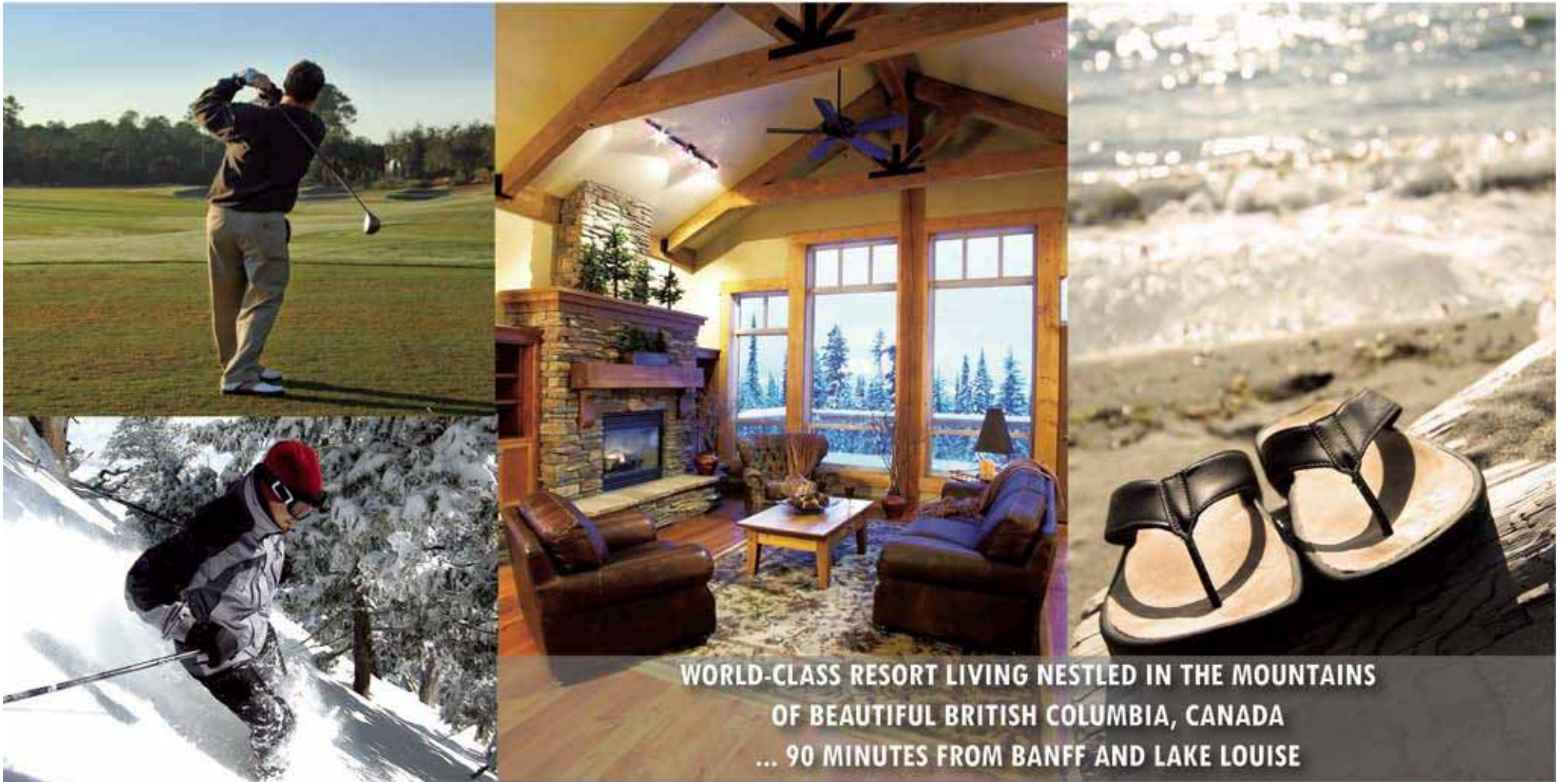
"It is an honor to work with a development company of the caliber of the Statesman Group," said GeoTility President, Jim Leask.

"Statesman President Garth Mann has a vision to bring their world-class resorts and communities to the market in a green and affordable way."

GeoTility is currently providing engineering and design consultation on Statesman's Pleasant Harbour Marina and Golf Resort in Puget Sound, Washington.

Again, geothermal technology along with other environmentally-sustainable technologies will reduce energy and water consumption, while making significant reductions in greenhouse gas emissions for the resort.

For more information about the development, visit www.discoverpineridge.com.



WORLD-CLASS RESORT LIVING NESTLED IN THE MOUNTAINS
 OF BEAUTIFUL BRITISH COLUMBIA, CANADA
 ... 90 MINUTES FROM BANFF AND LAKE LOUISE

The ULTIMATE Resort Destination

NO BUILDING COMMITMENT | SPECTACULAR VIEWS | RENTAL POOL | RESORT CENTRE | PATHWAYS | FITNESS FACILITY | POOL AND HOT TUB

discoverpineridge.com
1-866-580-2588

Phase I SOLD OUT!
Phase II 25% SOLD!



PRECONSTRUCTION PRICING AVAILABLE FOR A LIMITED TIME!

PHASE II LOTS
 COTTAGE AND VIEW
 from \$139,000

PHASE I TOWNHOMES
 2 STOREY MOUNTAIN VISTAS
 from \$499,000

Fully Service - Mature Forest
 Architectural Controls
 Geo-thermal Heating

Alpine Architecture
 9 ft. Ceilings - 3 Bedrooms
 Rich Finishing

Pineridge
 MOUNTAIN
 RESORT

OVER LAKE WINDERMERE

STATESMAN
RESORTS
what a beautiful way to live!

info@discoverpineridge.com