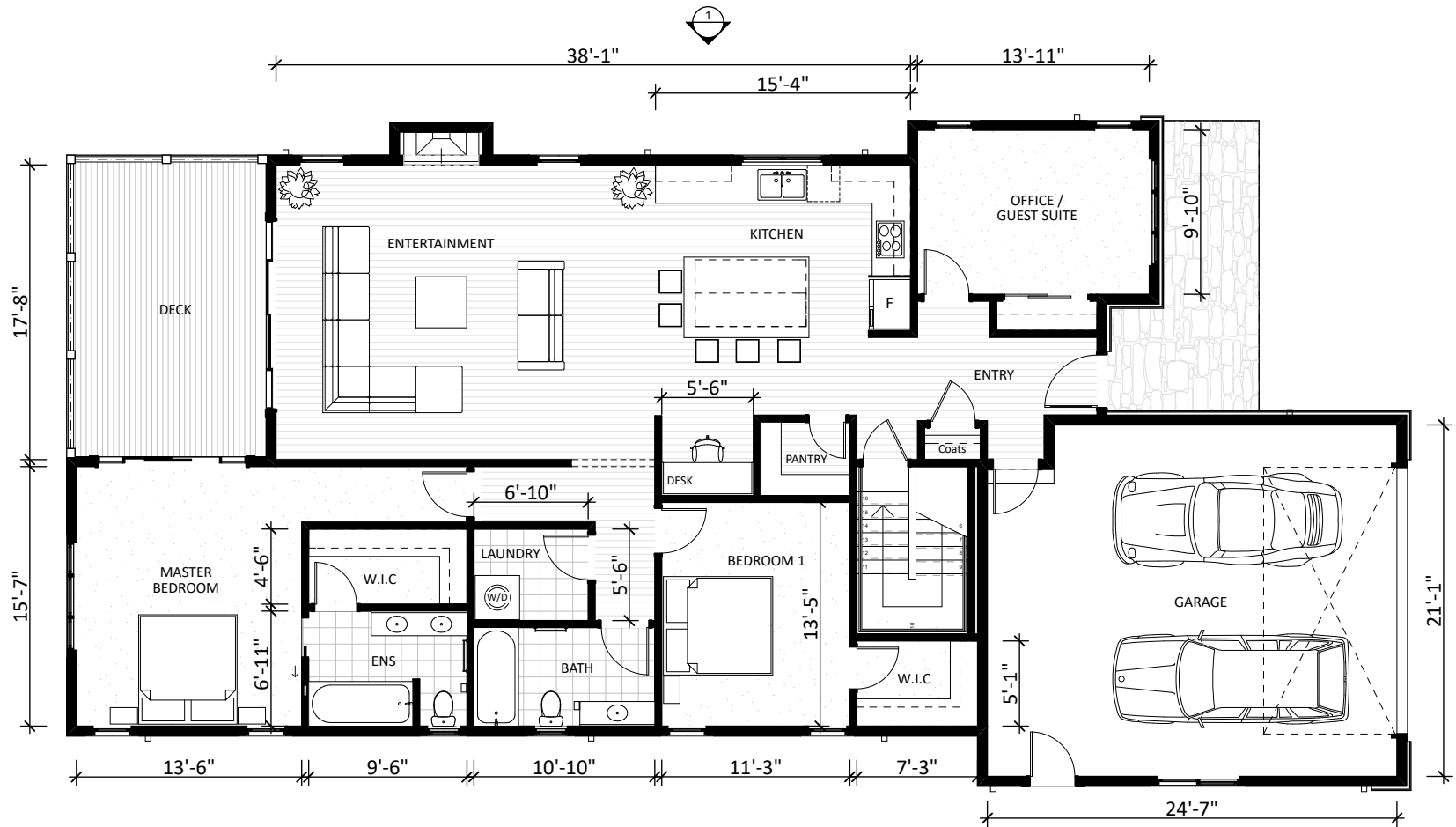


MAIN LEVEL





MAIN LEVEL

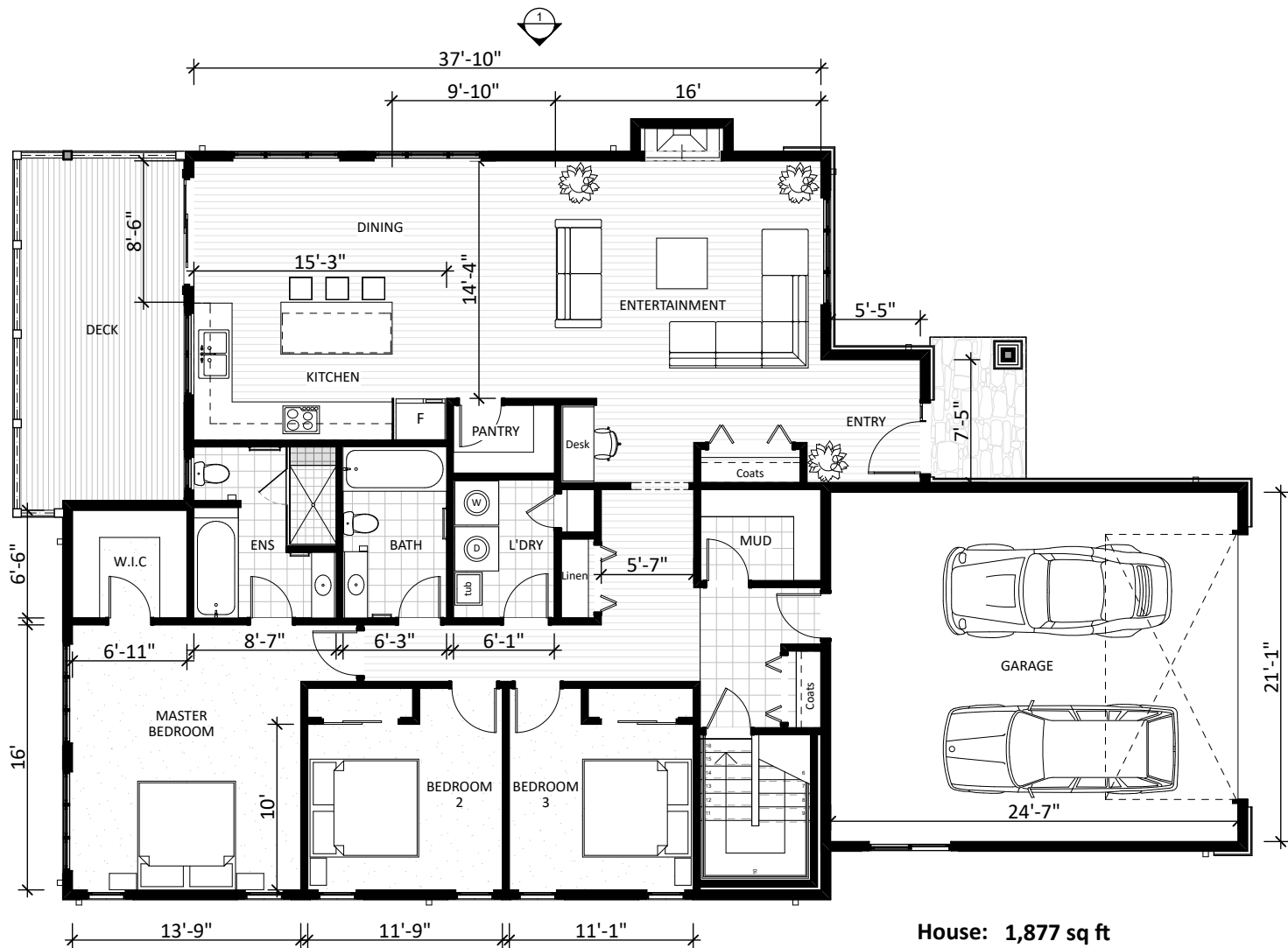
**Note:**  
Dimensions to finished  
face of drywall

House: 1,775 sq ft  
Garage: 508 sq ft  
Total: 2,283 sq ft



INVERMERE COTTAGE - THE OLIVE  
FLOOR PLAN

Drawing: MOD2.1

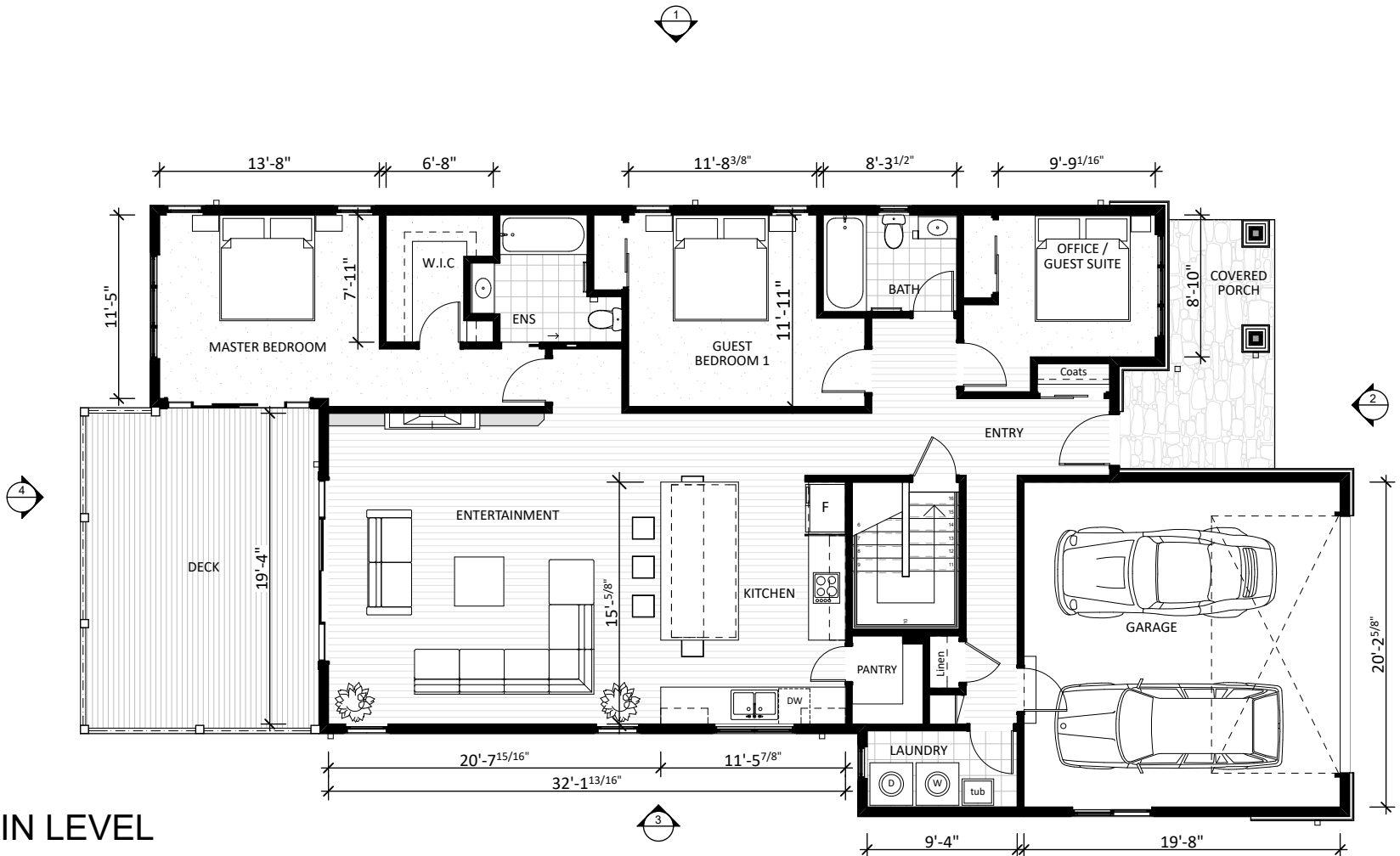


House: 1,877 sq ft  
 Garage: 518 sq ft  
 Total: 2,395 sq ft

**Note:**  
 Dimensions to finished  
 face of drywall

MAIN LEVEL





**MAIN LEVEL**

**Note:**  
 Dimensions to finished  
 face of drywall

**House:** 1,643 sq ft  
**Garage:** 398 sq ft  
**Total:** 2,041 sq ft

